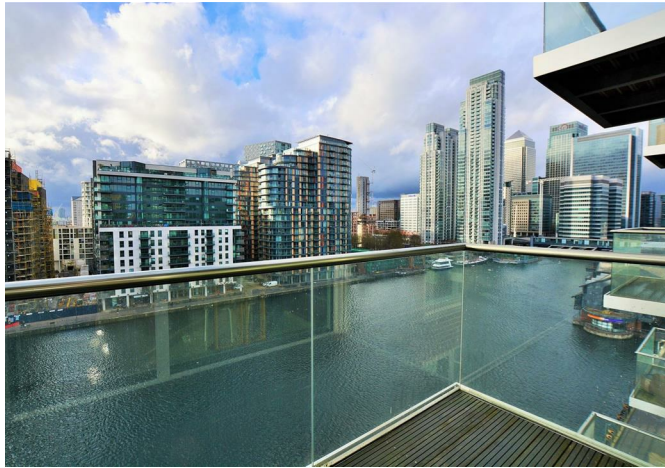


# *Franklyn* James

Baltimore Wharf, E14 9FG  
£2,000 Per Calendar Month







Baltimore Wharf, E14 9FG

**£2,000 Per Calendar Month**

A contemporary studio suite apartment within the extremely desirable Baltimore Wharf development which boasts 24 hour concierge, resident's gym and swimming pool.

This stunning studio suite apartment has been furnished to a great standard and is positioned on the sixth floor. Baltimore Wharf is superbly located being within moments of a selection of shops, bars and restaurants in Canary Wharf as well as the DLR and Jubilee Line stations.

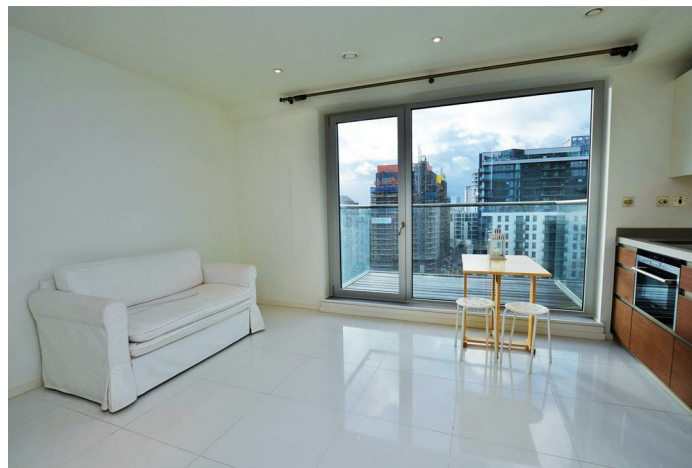


## Description

- Furnished
- Extremely desirable Baltimore Wharf development
- 6th Floor Luxury Studio
- Studio
- Juliet balcony
- Residents' gym
- 24 hour concierge
- Swimming pool
- Abundance of natural light
- Moments from Canary Wharf and Crossharbour DLR



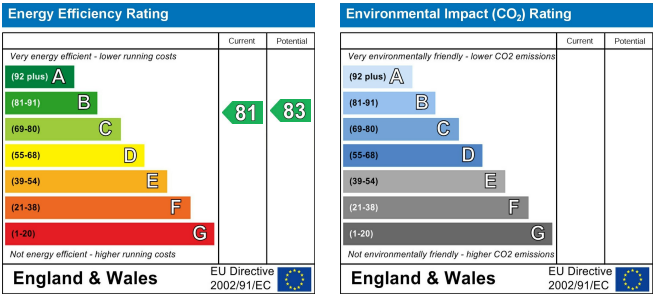
Furnished  
Council Tax Band: D  
Available: 13th April 2026



Area Map



Energy Performance Graph



These particulars, whilst believed to be accurate are set out as a general outline only for guidance and do not constitute any part of an offer or contract. Intending purchasers should not rely on them as statements of representation of fact, but must satisfy themselves by inspection or otherwise as to their accuracy. No person in this firms employment has the authority to make or give any representation or warranty in respect of the property.